

## MULTISAW MAINTENANCE

### Belts

It is important that belts are kept in good condition and are correctly tensioned at all times. The correct tensions are as follows;

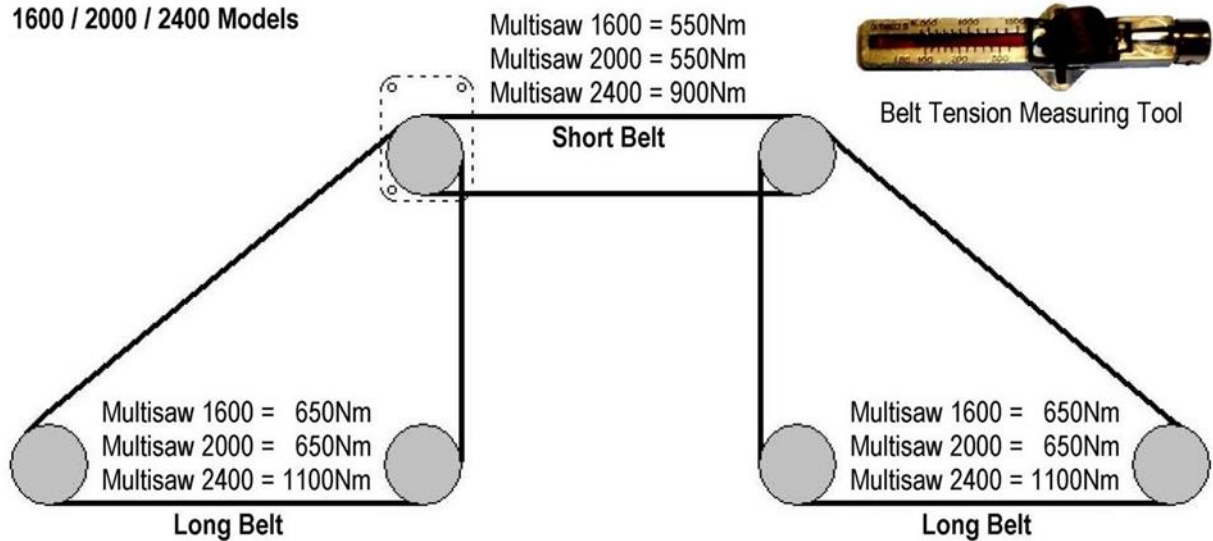
Multisaw 1400: New Belts 600Nm and Existing Belts 450Nm

Multisaw 1600: Short Belt 550Nm and Long Belts 650Nm

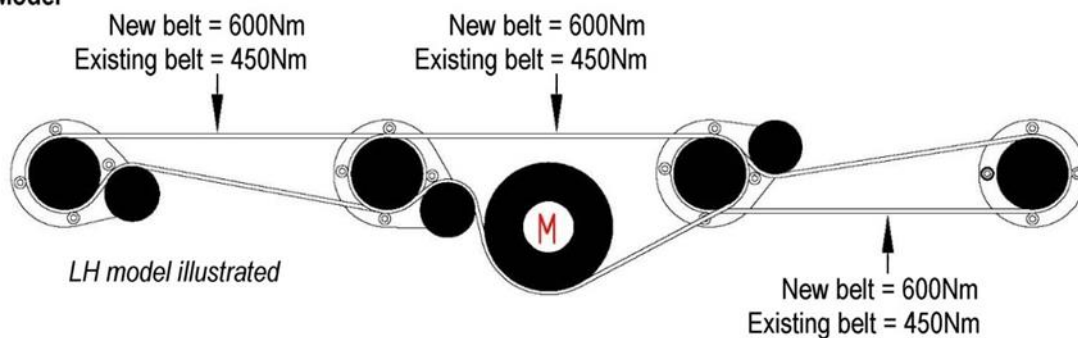
Multisaw 2000: Short Belt 550Nm and Long Belts 650Nm

Multisaw 2400: Short Belt 900Nm and Long Belts 1100Nm

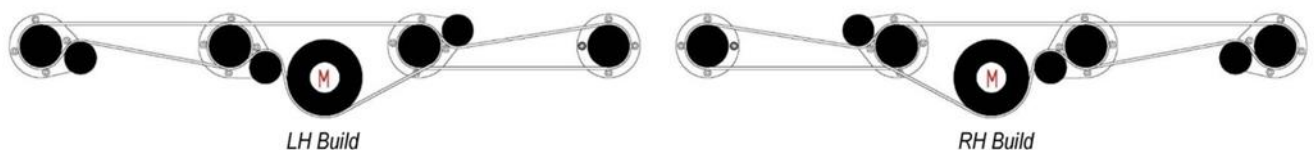
1600 / 2000 / 2400 Models



1400 Model



Multisaw 1400 - Belt Configurations



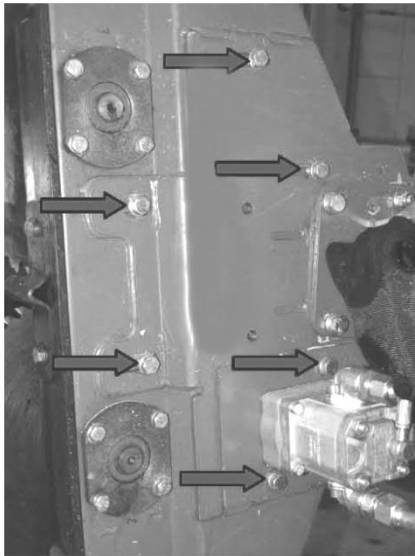
## Tensioning the Belts



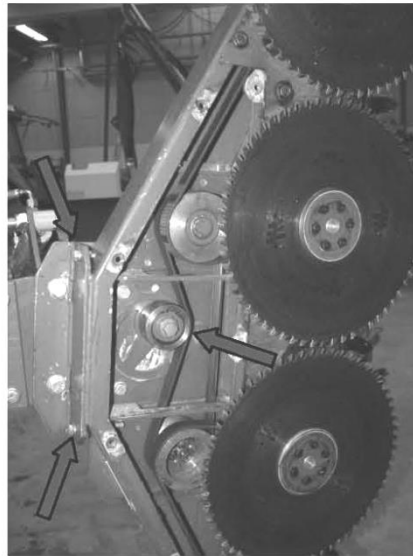
**CAUTION!** Care must be adopted when servicing this part of the machine as there is risk of trapping hands or fingers in the belts, pulleys and blades.

**WARNING:** Ensure cover is replaced and all bolts are re-tightened before using the machine.

Loosen bolts indicated



Remove cover



Loosen bolt and turn idler roller



Set tension of the centre belt



Set tension of lower belt



Set tension of upper belt



Set the tensions at centre point of the belts between the pulleys, turn blades a few times and re-check.

