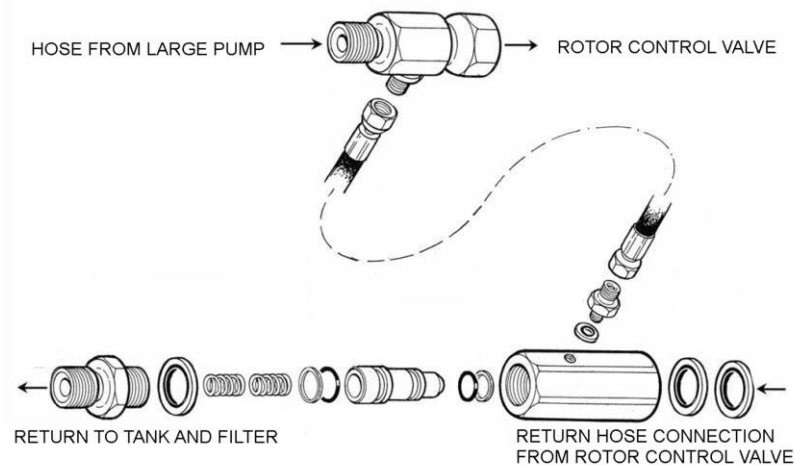


ROTARY DITCH CLEANER BACK PRESSURE KIT

Serious damage can be caused to the motor if it is allowed to cavitate when being shut down. To prevent this, positive pressure must be maintained in the return line at all times. All machines with piston pumps or gear pump machines with electric rotor control valves will maintain sufficient back pressure. Machines fitted with Cable rotor control valves will not maintain sufficient pressure so a back pressure kit must be fitted when the ditcher is in use and removed when the flail head is fitted.

BACK PRESSURE KIT for cable operated rotor control valves



Note: Electric Reverse Gear and Piston Machines DO NOT require a Back Pressure Kit.

A Back Pressure Kit is provided to prevent the motor from becoming 'starved' of oil during normal operation and whilst stopping and starting. The kit must be fitted in the return line hose from the motor and normally fits directly onto the motor control valve. This installation is as follows:

- The tank return 'T' (complete with hose) is disconnected from the valve, the back pressure valve is fitted onto the union and the 'T' reconnected onto the free end of the back pressure valve.
- Disconnect the pressure hose from the pump, fit the 1" BSP 'T' piece to the pressure port adaptor and reconnect the pressure hose.
- Complete the installation by joining the back pressure valve and the pressure line 'T' using the ¼" hose provided.

NOTE: *This installation allows the operator to select opposite rotation to clear a blockage.*

CAUTION

On reverting back to hedge cutting/mowing the Back Pressure Kit MUST BE REMOVED

